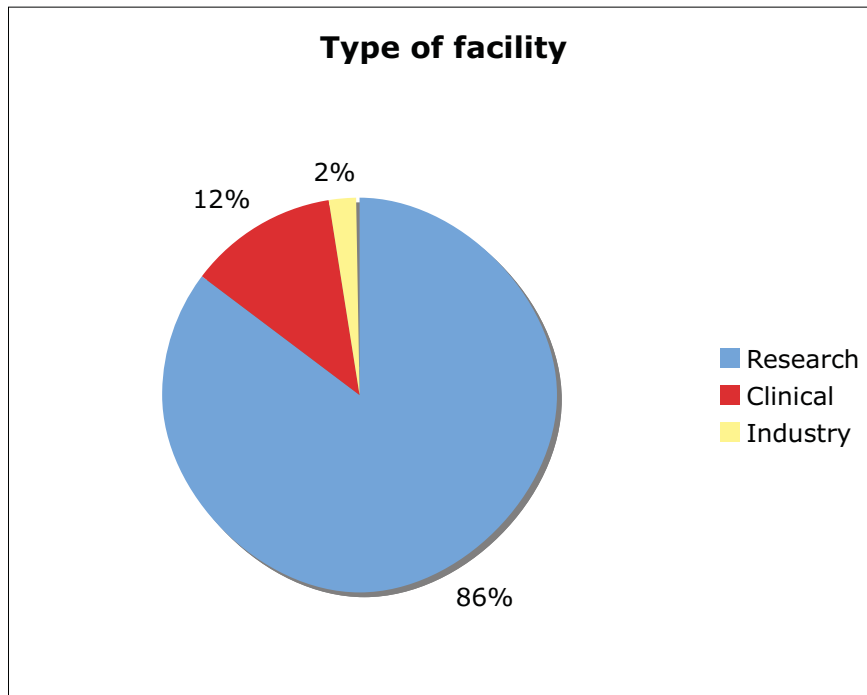


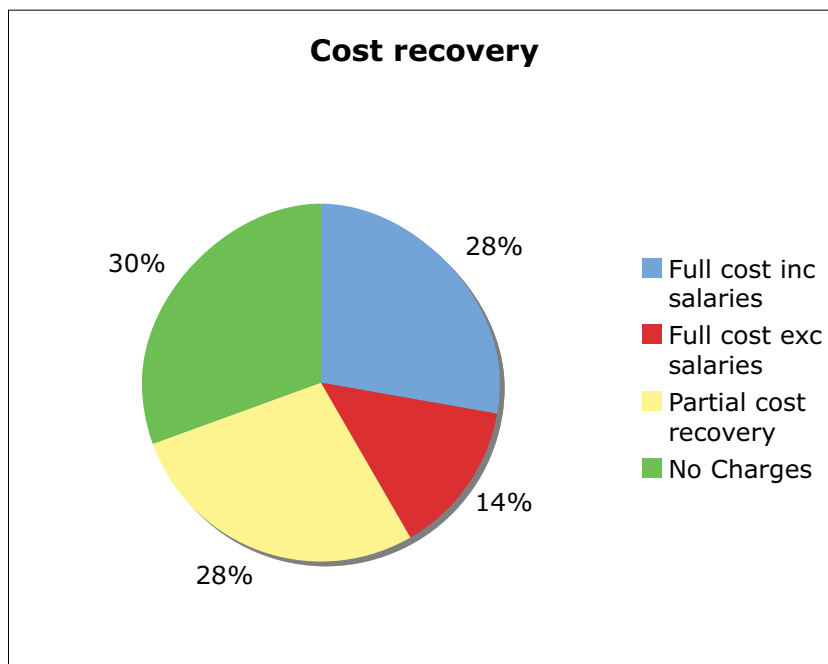
2009 UK Core Managers Survey Results

Total respondents: 46 (not all answered all questions)

Q1. Which type of facility do you run? - 41 respondents

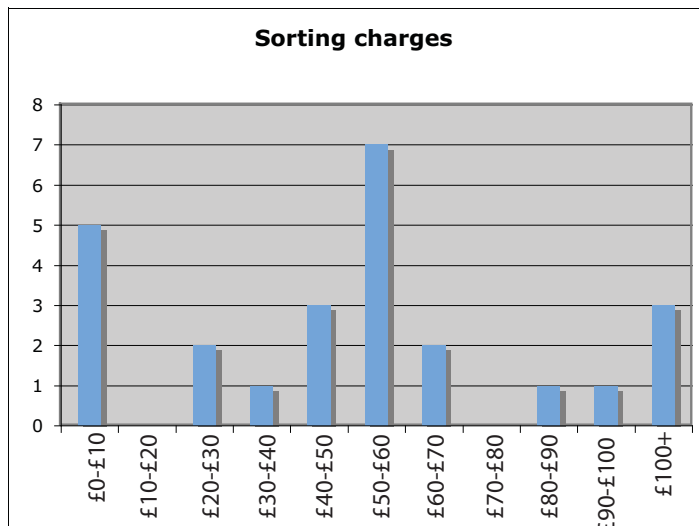
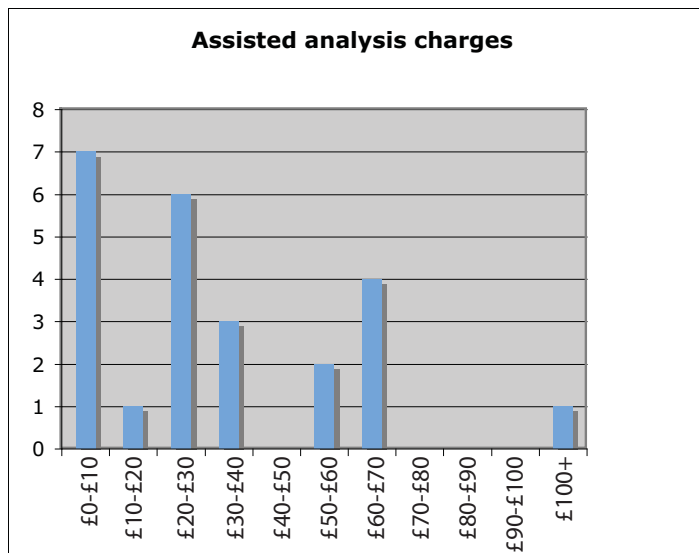
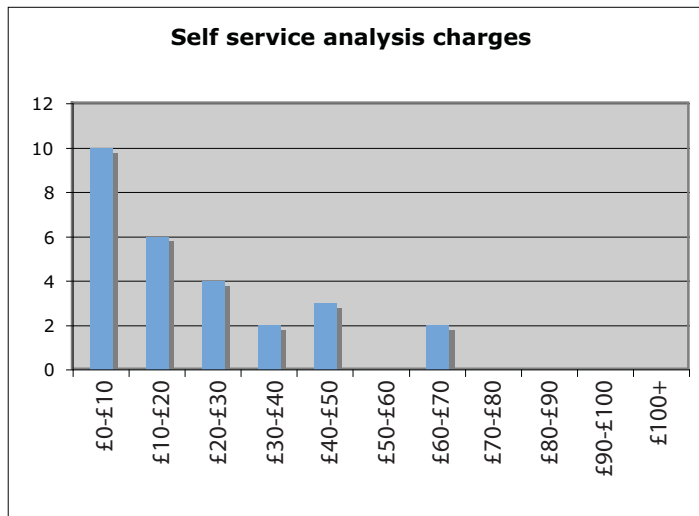


Q2. Which cost recovery system do you use? - 36 respondents



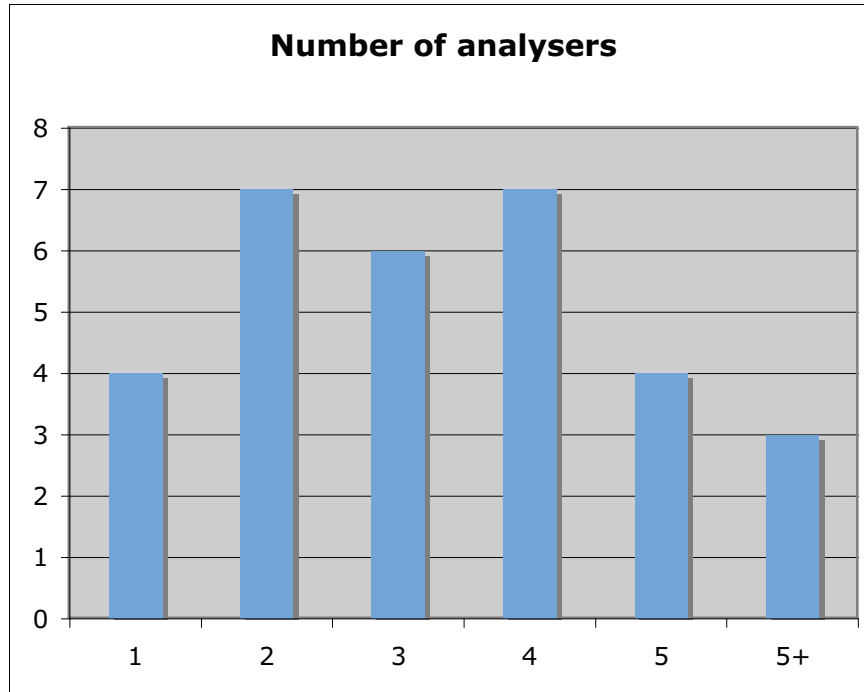
2009 UK Core Managers Survey Results

Q3 How much do you charge for.... - 28 respondents

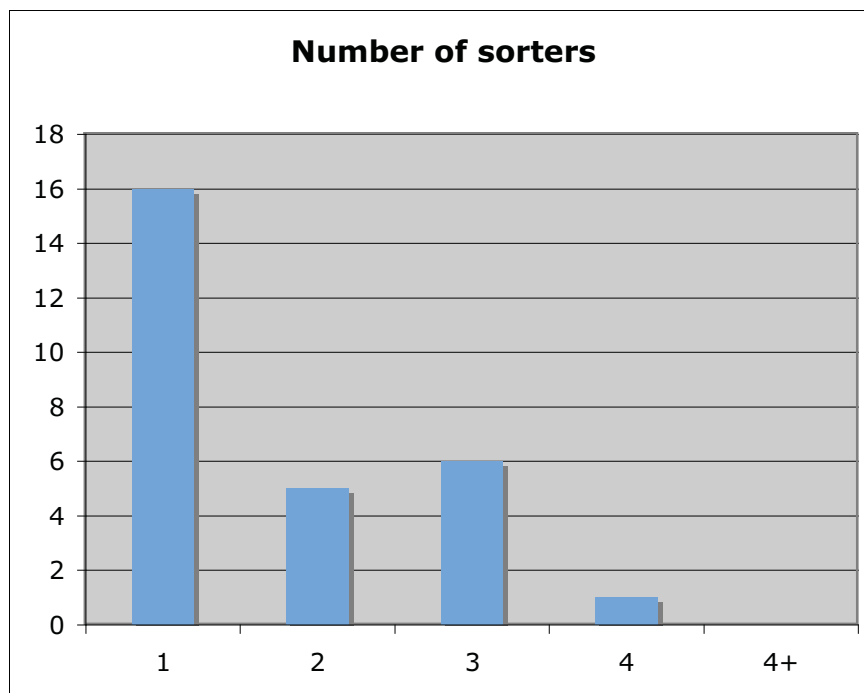


2009 UK Core Managers Survey Results

Q4 - How many analysers in your facility? - 31 respondents

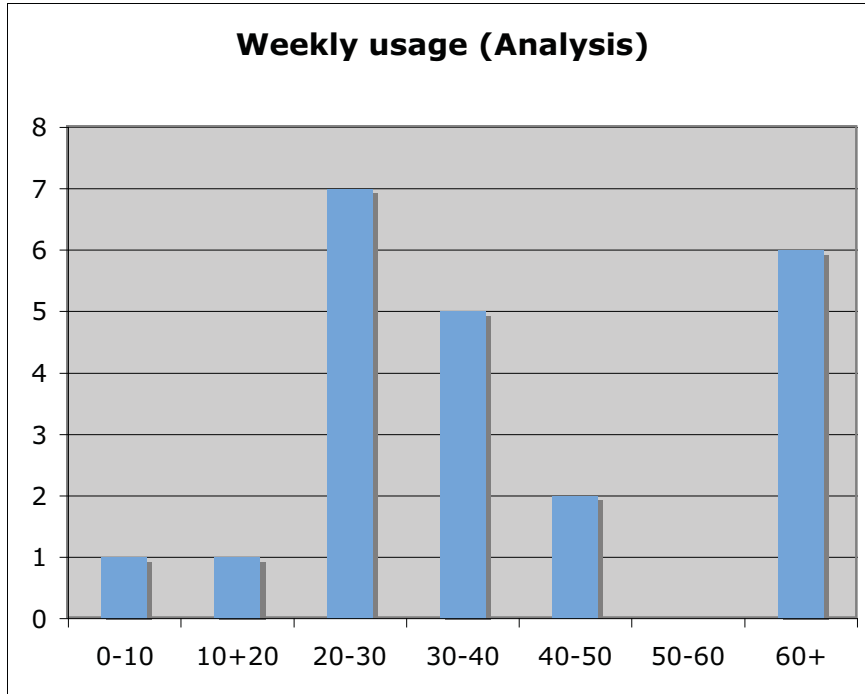


Q5 - How many sorters in your facility? - 28 respondents

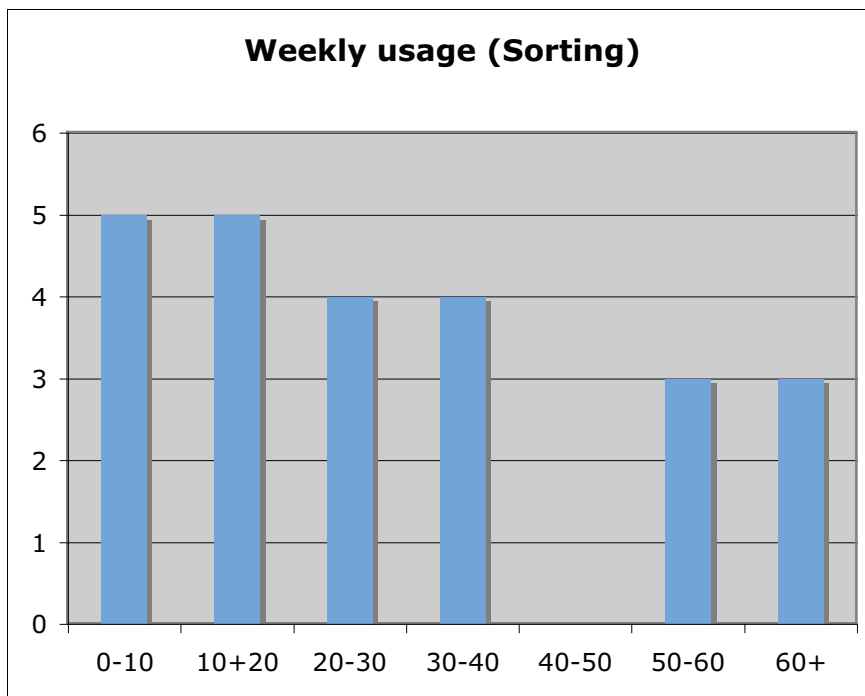


2009 UK Core Managers Survey Results

Q6 - What is your average weekly usage for analysers - 27 respondents

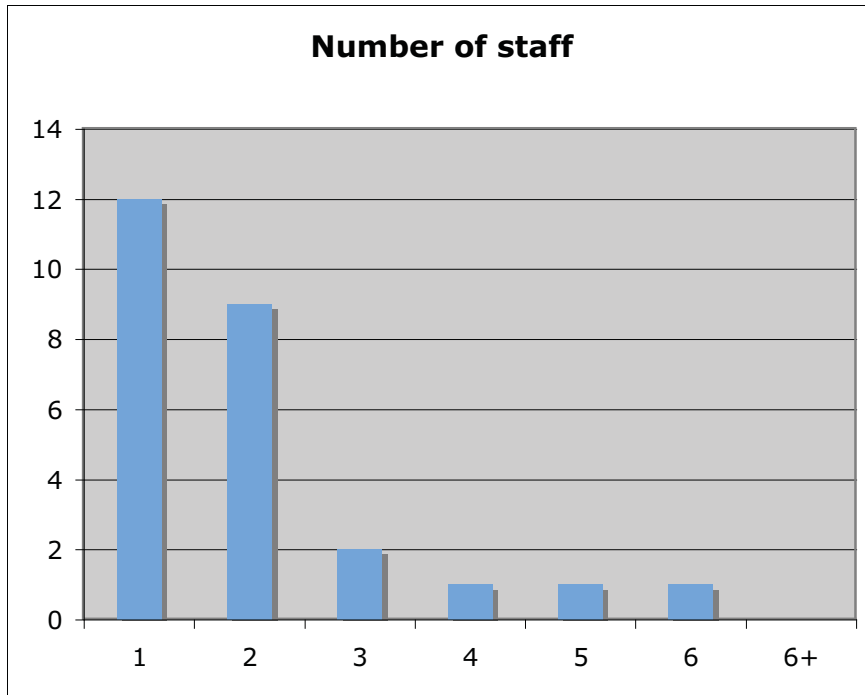


Q6 - What is your average weekly usage for sorters - 27 respondents

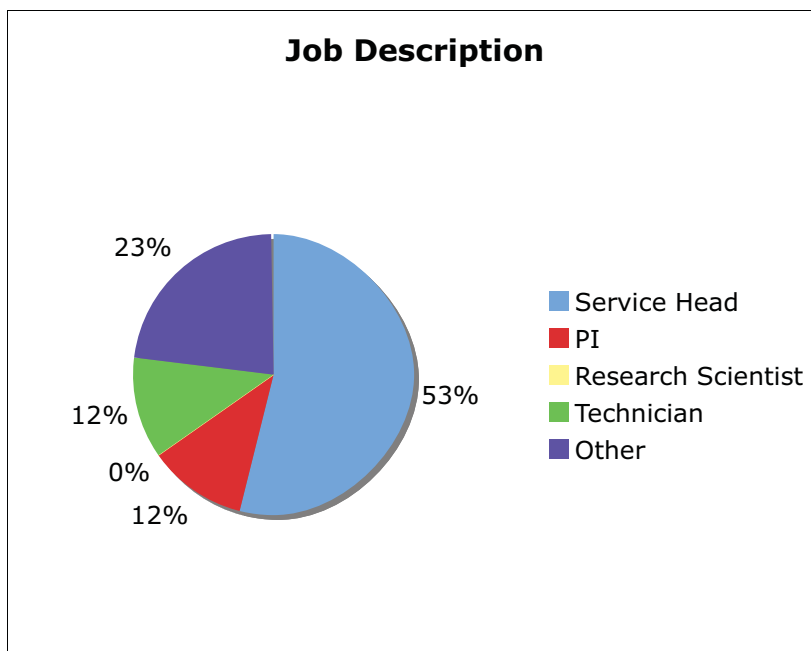


2009 UK Core Managers Survey Results

Q6- How many staff are in your facility? - 26 respondents



Q7 - What is your job description? - 22 respondents



Other: Lab Head; Flow Cytometry Manager; Flow cytometrist; Facility Manager;
Lab manager; Facility operator

2009 UK Core Managers Survey Results

Q8 - What is your salary? - 27 respondents

